

Overview

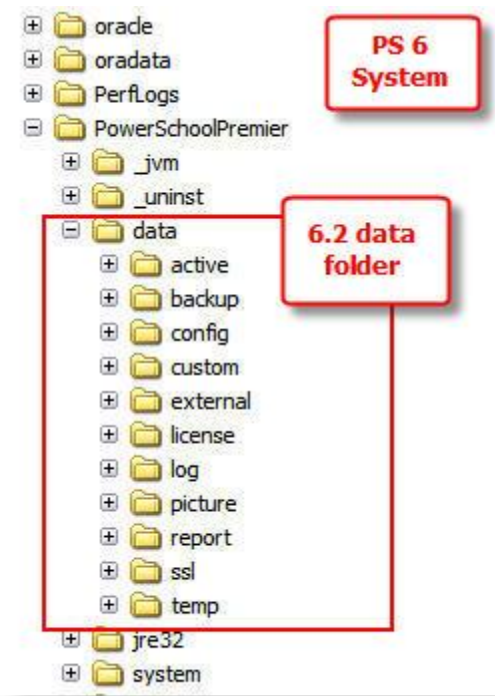
The data directory from your PowerSchool 6.2 server will be copied into the PowerSchool 7.1 import directory during the upgrade process. This directory contains photos, completed reports and custom web pages that can be imported into PowerSchool 7.1. This document is intended to provide basic instructions on how to import these items.

WARNING: This process will cause PowerSchool to be unavailable while the import completes. This process can take anywhere from 2-20 minutes depending on district size and the items chosen to import.

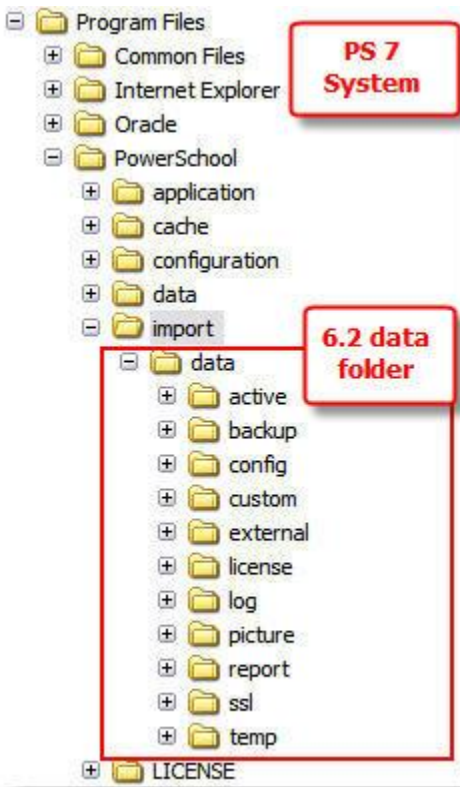
If you would like assistance completing this process please submit a [Helpdesk Ticket](#) or send an [e-mail](#) to the Student Services group.

6.2 Data Directory

The PowerSchool 6.2 data directory can be found in the PowerSchoolPremier directory:



The log sub-directory will be archived and cleared prior to the transfer to the 7.1 PowerSchool server. This directory can become rather large and serves no purpose on 7.1. The data directory is copied to the import directory (Program Files\PowerSchool\import) on the PS 7.1 server in preparation of import:

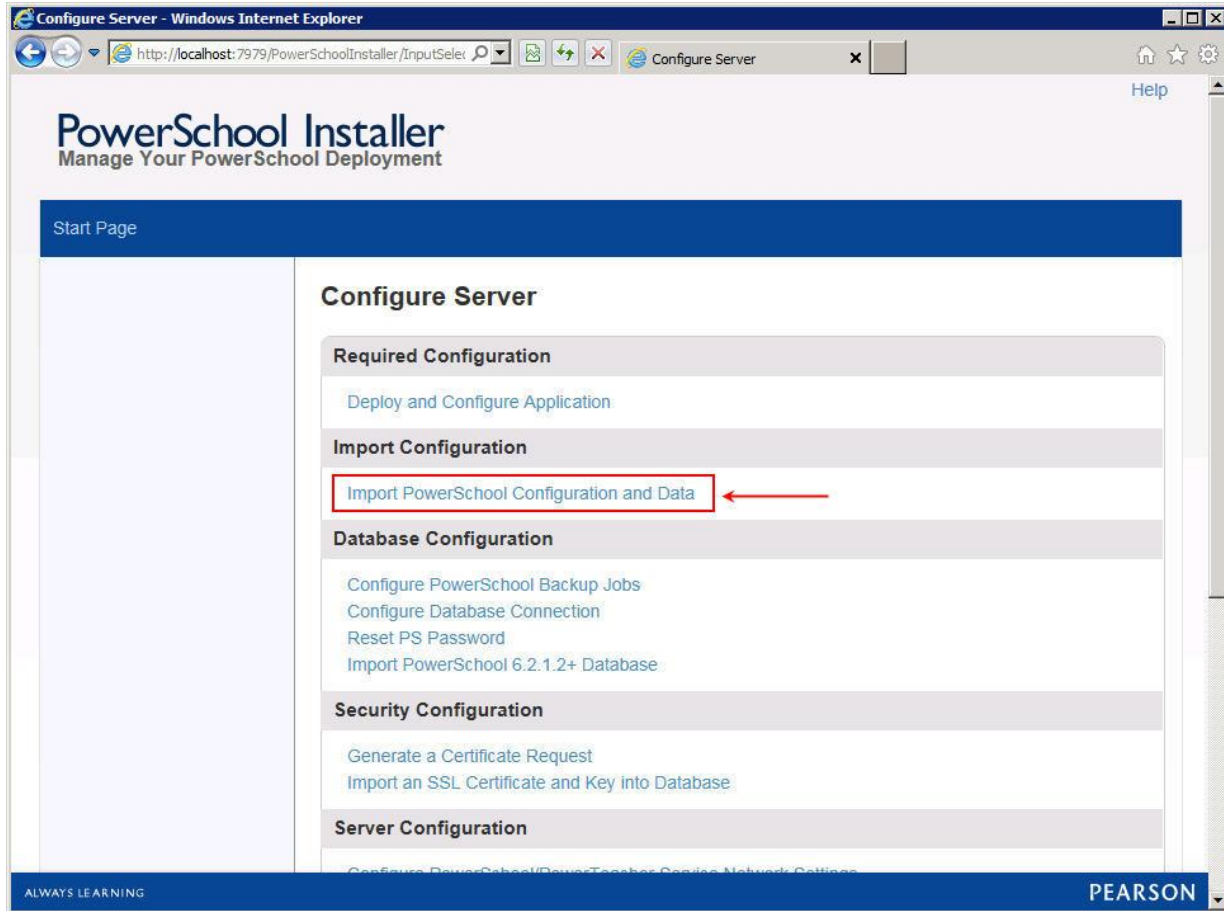


If you do not wish to import any of the configuration or data (photos, completed reports or custom web pages), it is recommended that you move the 6.2 data directory from the PS 7.1 import directory to prevent accidental importing.

7.1 Import Configuration and Data

1. On the 7.1 server, navigate to **Program Files -> PowerSchool** and double-click **PowerSchool Installer.html** to launch the PowerSchool Installer.

2. Click on **Import PowerSchool Configuration and Data**:



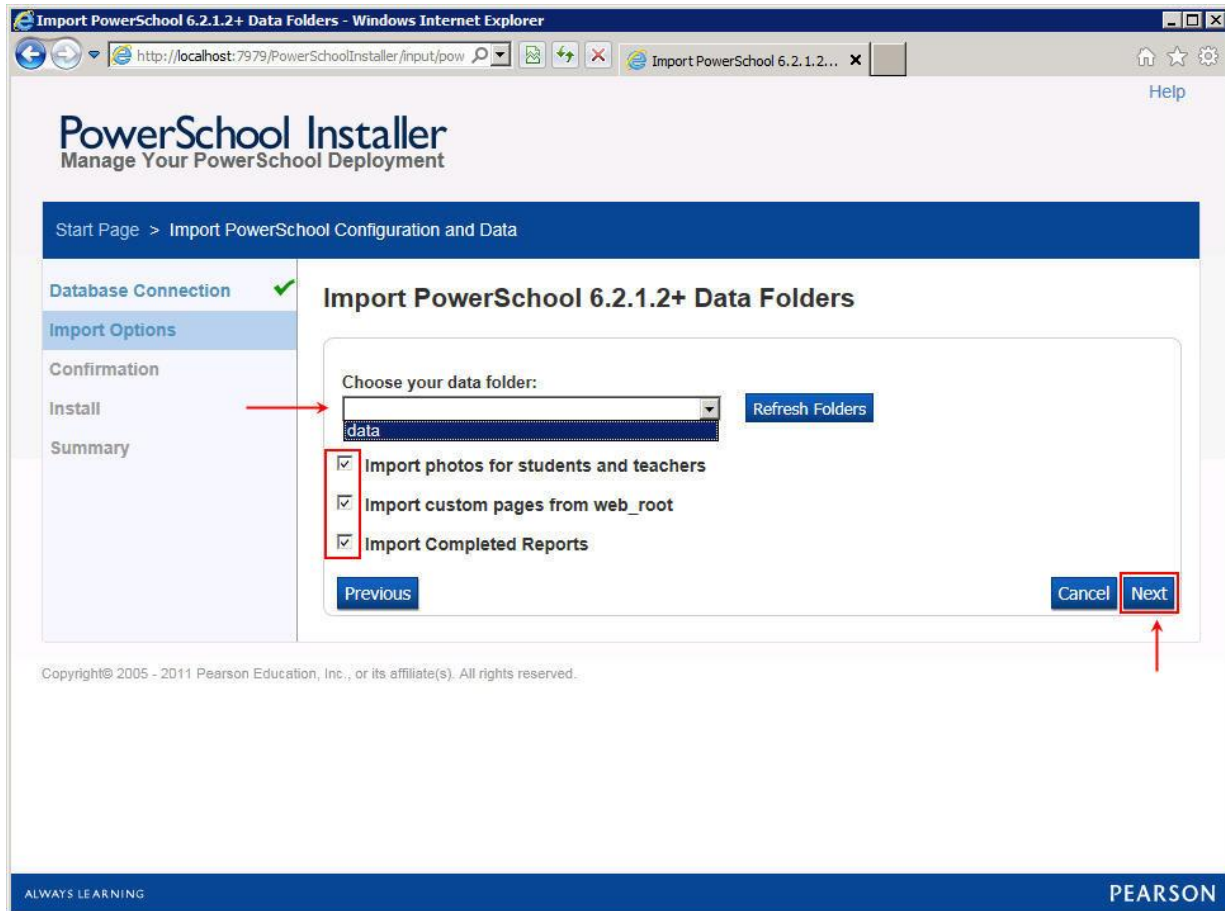
3. Click **Next** on the Database Connection screen:

The screenshot shows a web browser window titled "Database Connection - Windows Internet Explorer". The address bar shows the URL "http://localhost:7979/PowerSchoolInstaller/input/db/c". The page content includes the "PowerSchool Installer" logo and the text "Manage Your PowerSchool Deployment". A navigation breadcrumb shows "Start Page > Import PowerSchool Configuration and Data". A left sidebar contains a menu with "Database Connection" (selected), "Import Options", "Confirmation", "Install", and "Summary". The main content area is titled "Database Connection" and contains a form with the following fields:

- Database Host:** Input field containing "ptest.ps.nwoca.org".
- Database Port:** Input field containing "1521". Below the field is the text: "Port on which the database is configured to listen. Usually 1521."
- Database SID:** Input field containing "PSTESTDB".
- Oracle PS Password:** Input field with masked characters "••••••••".

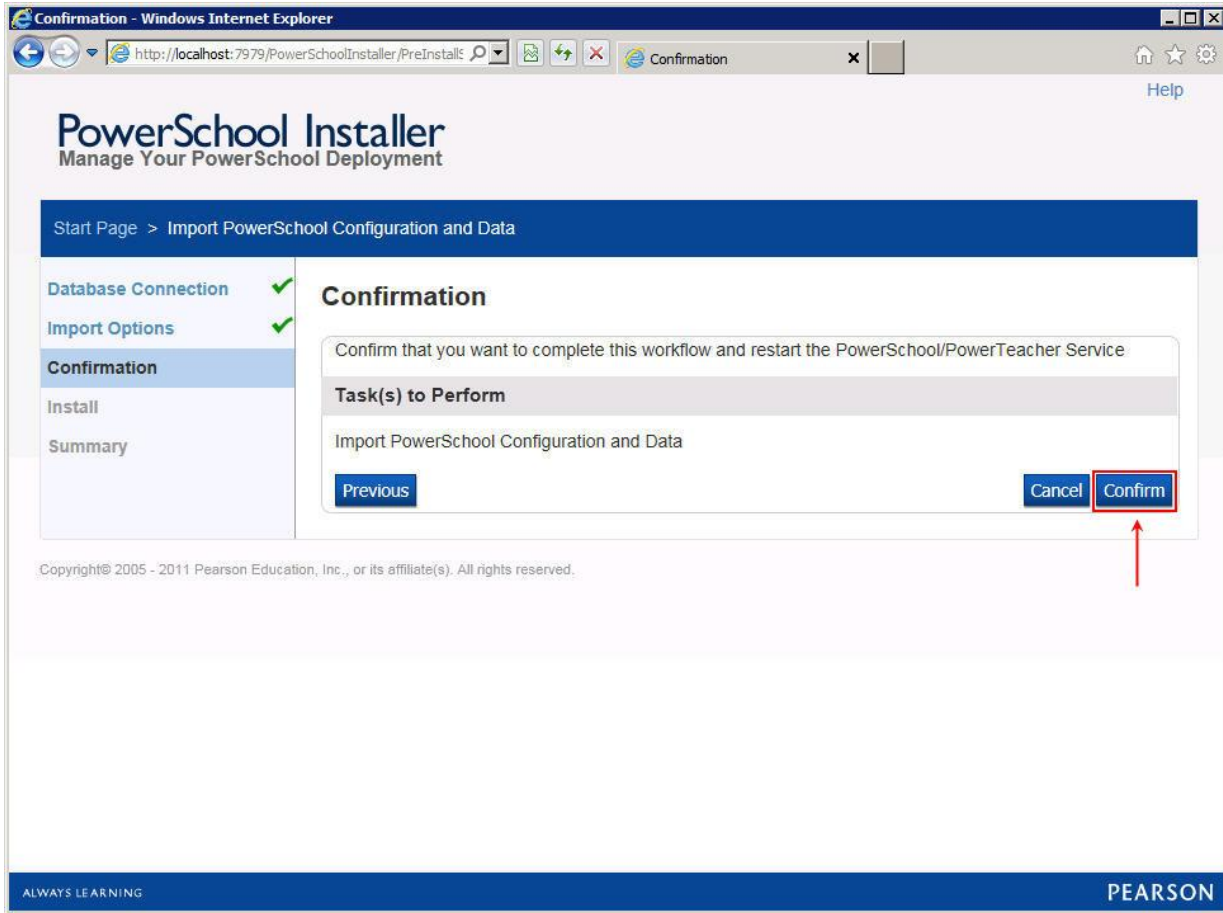
At the bottom right of the form area, there are two buttons: "Cancel" and "Next". The "Next" button is highlighted with a red rectangular box, and a red arrow points upwards to it. At the bottom of the page, there is a footer with "ALWAYS LEARNING" on the left and "PEARSON" on the right. A copyright notice at the bottom left reads: "Copyright© 2005 - 2011 Pearson Education, Inc., or its affiliate(s). All rights reserved."

4. Select **data** from the *Choose your data folder* drop down, check the items you want to import and click **Next**:



*Note: If the data folder does not appear, even after clicking **Refresh Folders**, verify the data folder is in the import directory: Program Files\PowerSchool\import.*

5. Click **Confirm** to begin importing:



6. PowerSchool will be stopped, the data imported, then PowerSchool will be started once again:

Import PowerSchool Configuration and Data - Windows Internet Explorer

http://localhost:7979/PowerSchoolInstaller/Monitor.Jol

PowerSchool Installer
Manage Your PowerSchool Deployment

Start Page > Import PowerSchool Configuration and Data

Database Connection ✓
Import Options ✓
Confirmation ✓
Install
Summary

Import PowerSchool Configuration and Data

Current Step: tomcat-oltp:stop-service

Copyright © 2005 - 2011 Pearson Education, Inc., or its affiliate(s). All rights reserved.

ALWAYS LEARNING PEARSON

7. Click **Done** when the process completes:

